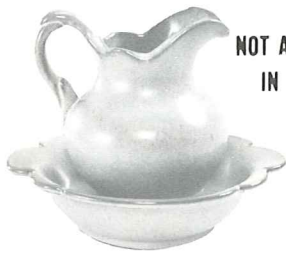


Appropriate Containers for Flower Arrangements and Planters

F30A—5½" PITCHER 6.00
F30B—7" BOWL 4.00

40A—4" PITCHER 4.75
40B—5" BOWL 3.00

NOT AVAILABLE
IN FLAME



F30AB—PITCHER & BOWL SET
10.00

40AB—PITCHER & BOWL SET
7.75

302—6" CANDLE VASE
4.75

6.00
59—CANTEEN W/HANGER
Not Available in Terra Cotta.

C-33—5" BOOT MUG
4.00



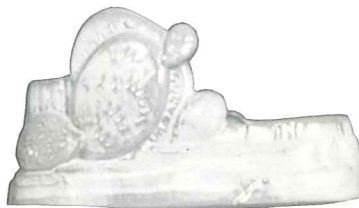
8.00
A8—8½" JARDINIÈRE
Not Available in Flame

6.00
A7—7" JARDINIÈRE

4.00
A6—6" JARDINIÈRE

9.25
70-A—7" RINGED JARDINIÈRE

6.50
70-B—5½" RINGED
JARDINIÈRE



71—10" LEAF HANDLED VASE
15.00

394—5" OWL PLANTER
5.00

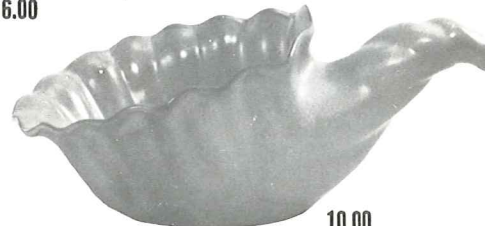
1206—10" CACTUS PLANTER
(No Terra Cotta or Flame)
6.00

T9
7" SHELL BOWL
3.75

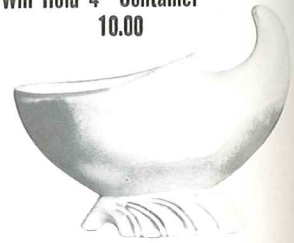
395—6" PLANTER W/SAUCER
Bottom Drain Hole
Will Hold 4" Container
10.00



B3—4½" CORK BARK PLANTER
4.75



10.00
222—12" CORNUCOPIA
(Not Available in Flame)



57—7" CORNUCOPIA
5.50

FIGURINES



170—Turtle Paper Weight
2.50



465—Covered Wagon Ashtray
4.00



469—4½" SAFETY
ASH TRAY
3.25



474—4" ROUND
ASH TRAY
3.25



109—BABY BIRD
5.00



108—MOTHER BIRD
5.00



453—7" ARROWHEAD
5.00



458—7" THREE SIDED
5.00

CANDY/NUT CUPS

MINIATURES: Appropriate for Pin Trays,
Nut Cups, Ash Trays, etc.



513—4" Clover 2.25



477—4" Dogwood 2.25



463—4" Arrowhead 2.25



512—4" Leaf 2.25